

*från ca ~~1775~~  
1920*

ORREFORS

**RETURN TO:**

AB Orrefors Glasbruk

S-380 40 Orrefors, Sweden



# ORREFORS BRUKS AKTIEBOLAGS

*TILLVERKNING AV*  
**KRISTALLGLAS**



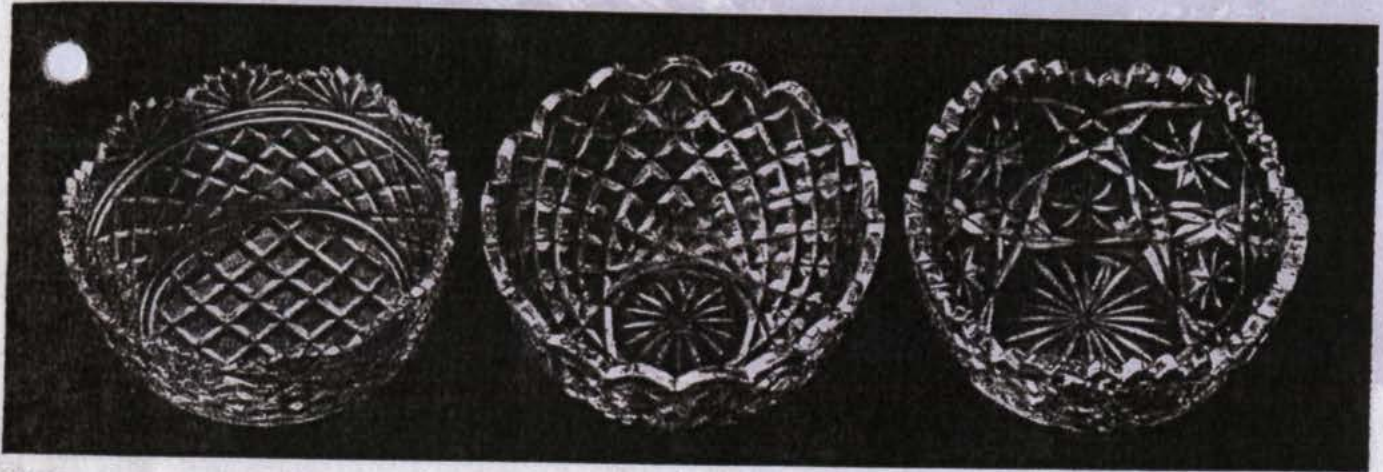
*JÄRNVÄGS- & POSTADRESS: ORREFORS*  
*TELEGRAMADR.: ORREGLAS, ORREFORS*  
*RIKSTELEFONER: ORREFORS N:RIS 1—12*





ERIK/BRILJANT

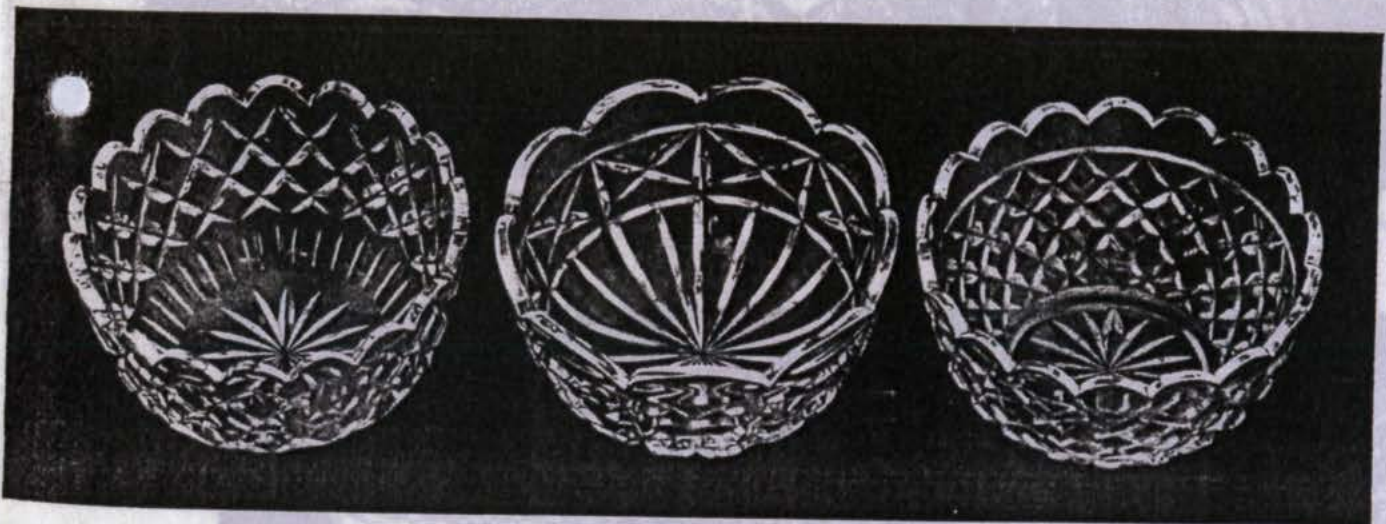
JERKER/BRILJANT



STINA/A. R.

STINA/BRILJANT

STINA/H 9

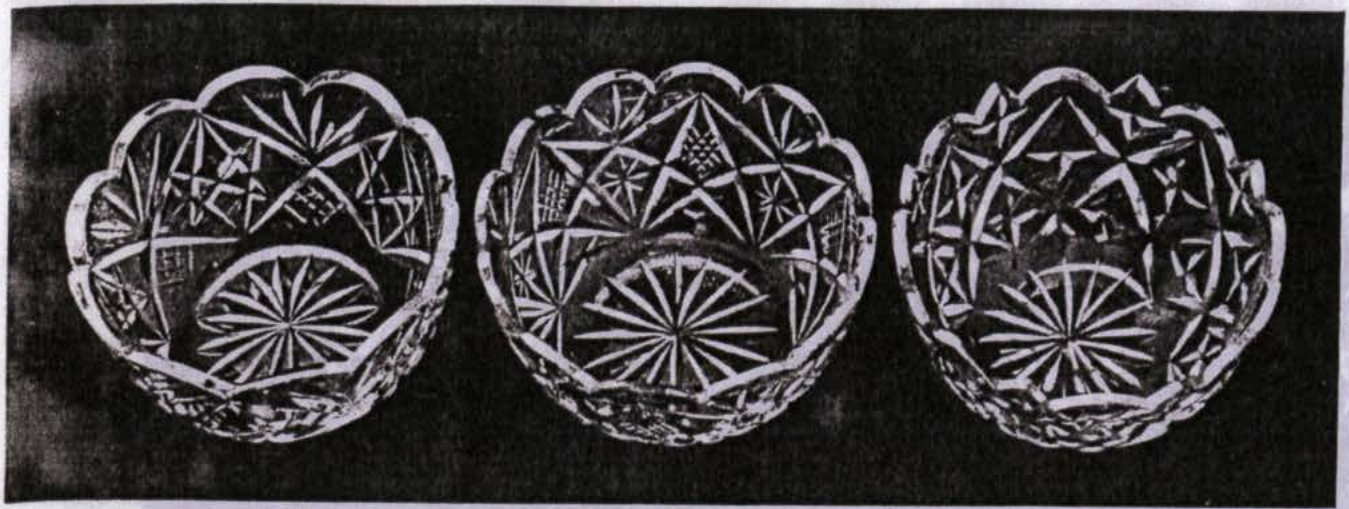


STINA/OB

STINA/H 22

STINA/ANTIKUS

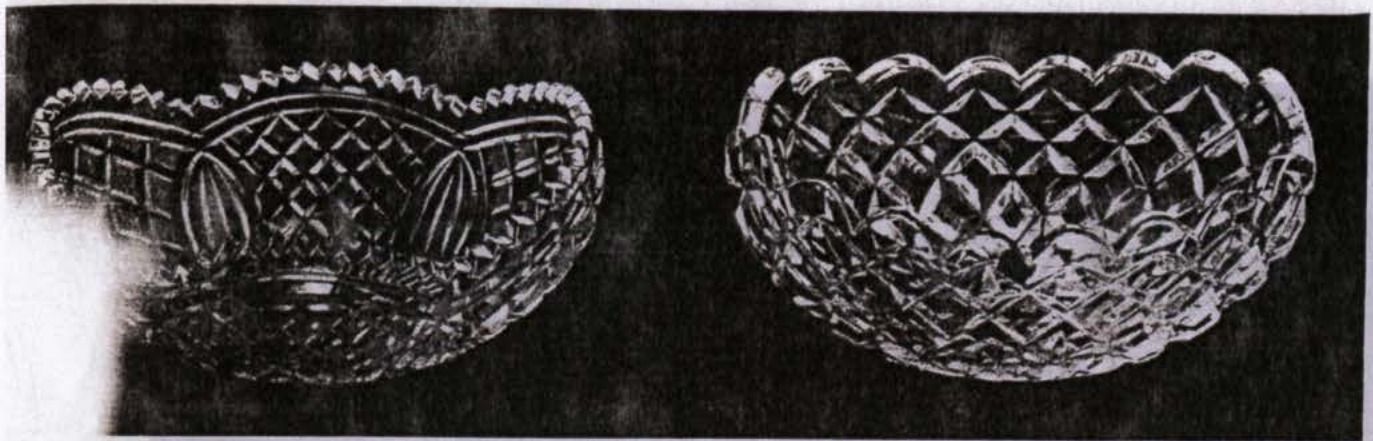




STINA/GÖTA

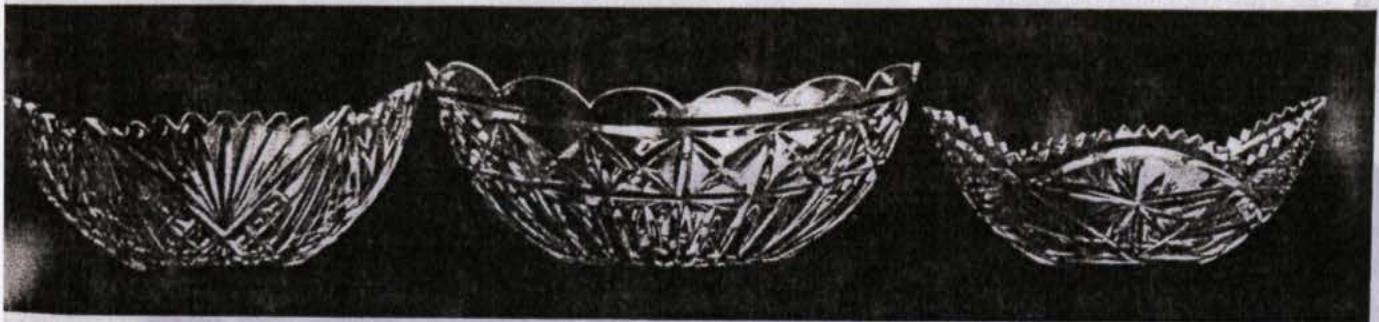
STINA/GUNNAR

STINA/H 7



ADOLF/A. R.

ADOLF/BRILJANT



BOSTRÖM/H 16

BOSTRÖM/H 22

BOSTRÖM/FRANS



BOSTRÖM/BRILJANT

BOSTRÖM/A. R.

BOSTRÖM/H 17

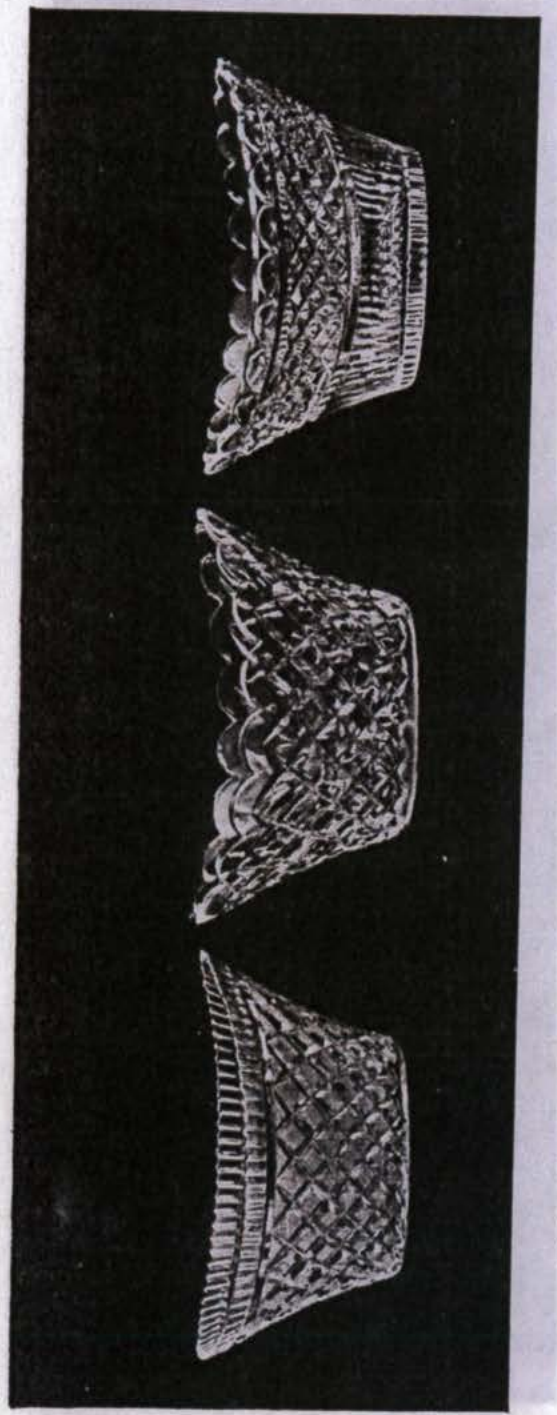










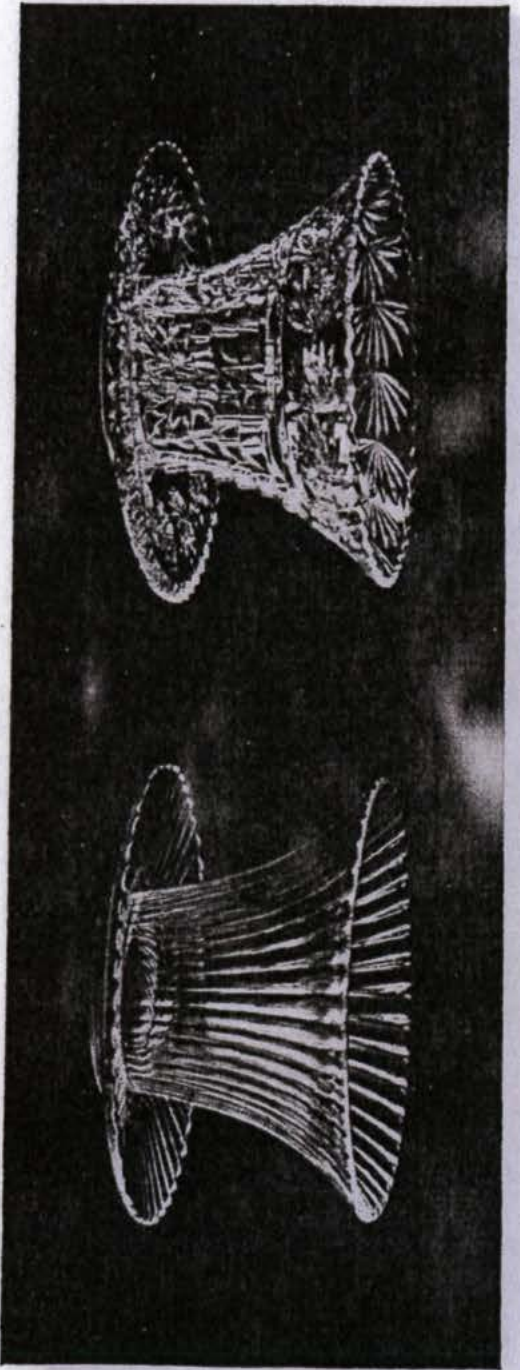


FEHR RUT      FEHR BRILJANT      FEHR BERO

	set. 1000				set. 500				set. 250				m/m	240	
	001	002	003	004	005	006	007	008	009	010	011	012			013
Fehr Rut.....															
Fehr Brilljant.....															
Fehr Bero.....															







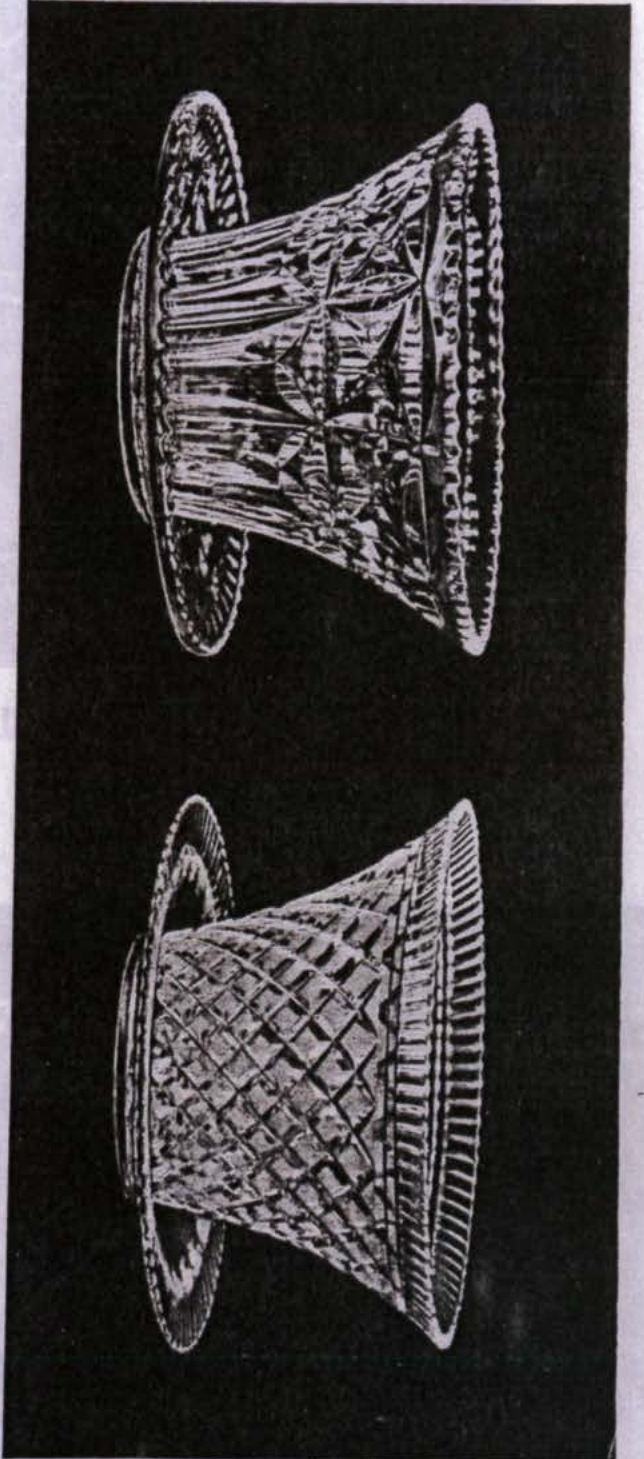
NILS SPENSER

NILS OLIVA

	Med fat			Utann fat		
	160	200	250	160	200	250
Nils Spenser .....						
Nils Oliva .....						







NILS OTTO

NILS RUT

	m/m	Med fat			Utan fat		
		160	200	250	160	200	250
Nils Otto .....							
Nils Rut .....							
.....							
.....							



KARINVERDUN

KARINBRILJANT





PLATEN/BRILJANT

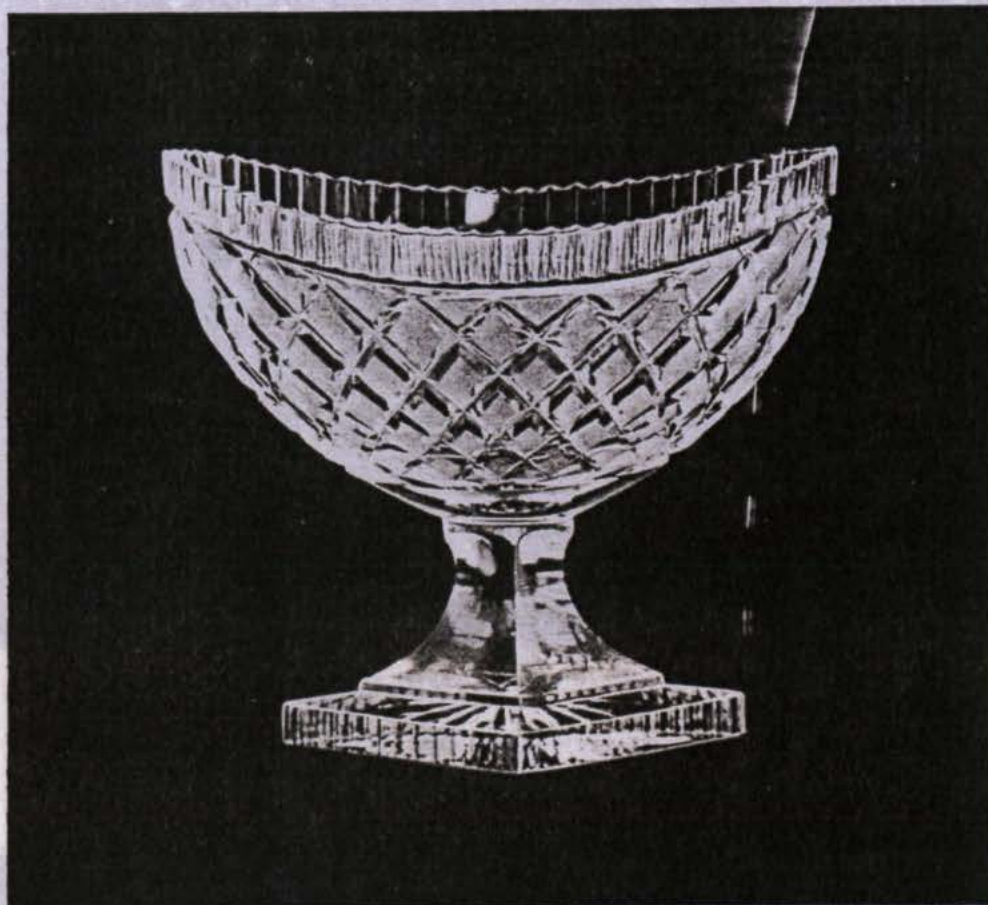


KARIN/BRILJANT

KARIN/VERDUN







PLATEN RUT

m/m	160	200	240	300	350	400
Platen Rut .....						
.....						
.....						
.....						
.....						





KAJSA/A. R.

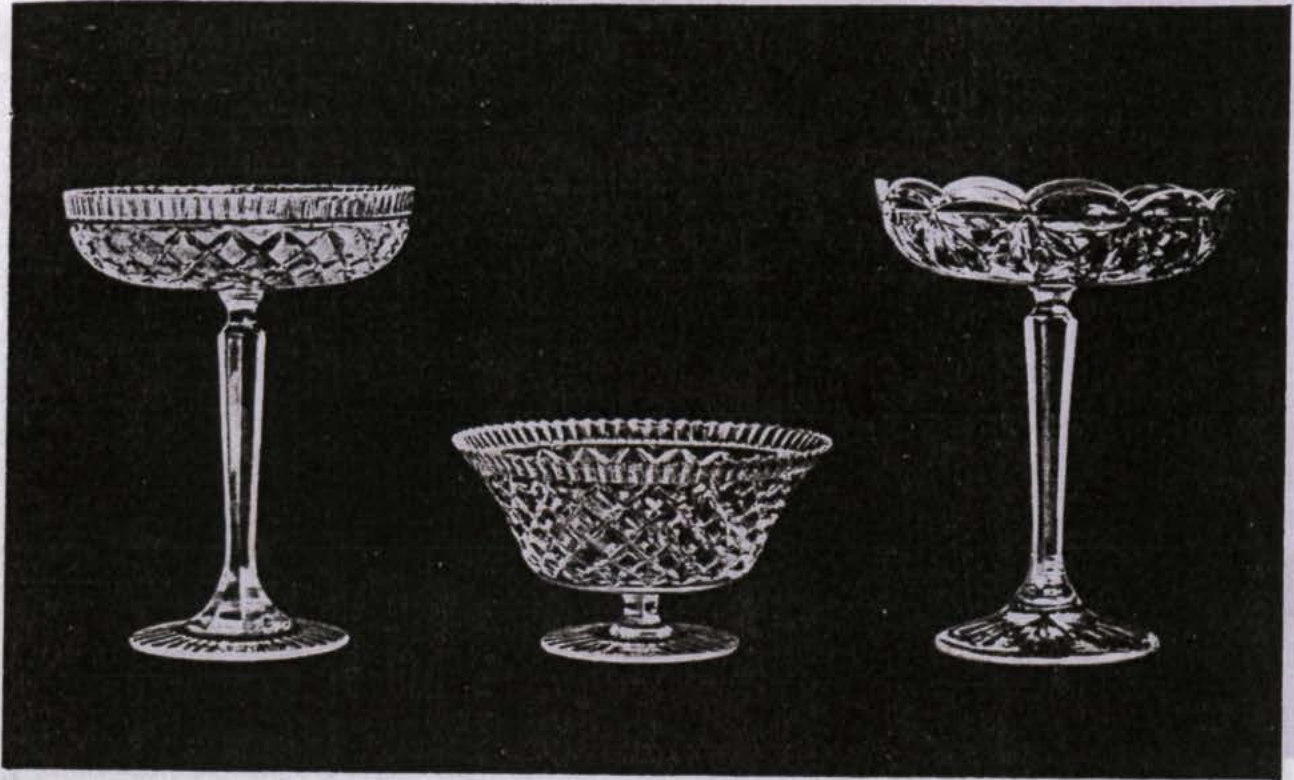
KAJSA/BRILJANT



PLATEN/BERO

PLATEN/POSEN





KAJSA RUT

KAJ MAJ

KAJSA OTTO

	m/m	130	160	180	200
Kajsa Rut .....					
Kaj Maj .....					
Kajsa Otto .....					
.....					
.....					
.....					





ERIK BERO

ERIK OTTO

					m/m	200	230
Erik Bero	.....	.....	.....	.....			
Erik Otto	.....	.....	.....	.....			
	.....	.....	.....	.....			
	.....	.....	.....	.....			
	.....	.....	.....	.....			





WALDERSEE/BRILJANT



WALDERSEE/1000

Made in Austria  
Champagne glass



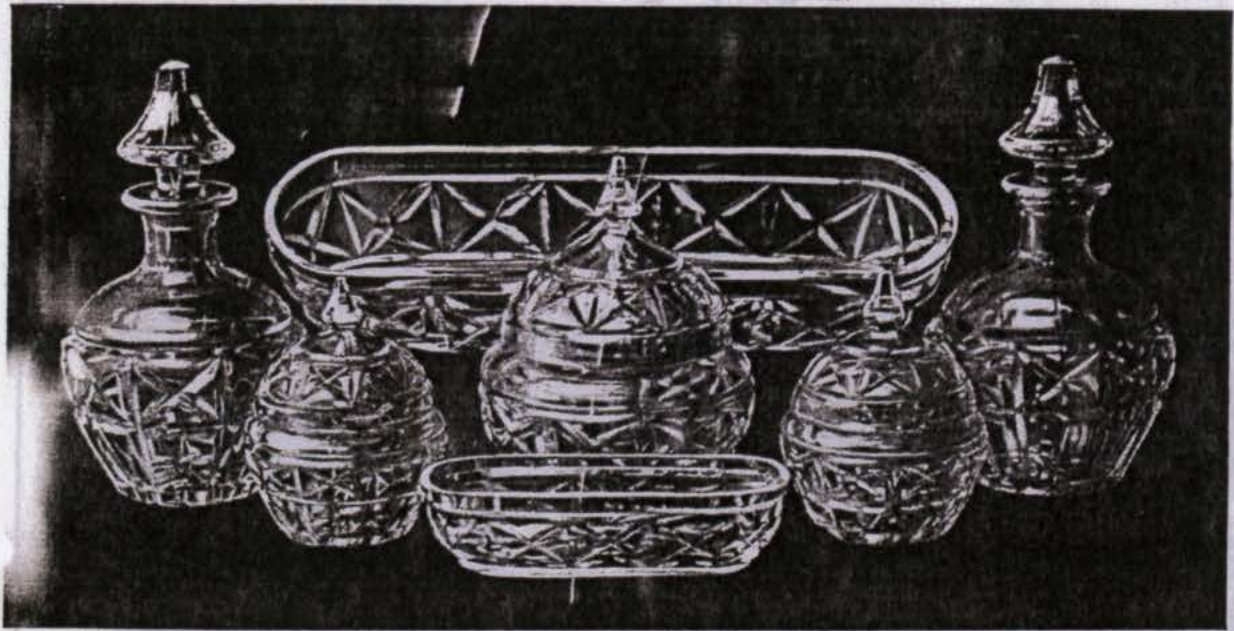


FRIDA OLIVA

*Gate 1926*

Vinglas .....	2 och 2 1/2 cl.			Punschglas .....		
» högt ben 2 »	2 1/2 »			Brännvinsglas .....		
» .....	5 »			Vattenglas .....	15 cl.	
» .....	7 1/2 »			Dricksglas .....	25 »	
» .....	10 »			» .....	35 »	
» gröna .....	10 »			Grogglas .....	45 »	
» » .....	15 »			Römer överfång .....		
» .....	15 »			Skölkoppar .....		
» .....	25 »					
Madeiraskålar .....						
Champagneskålar .....						





SIMON/H 22

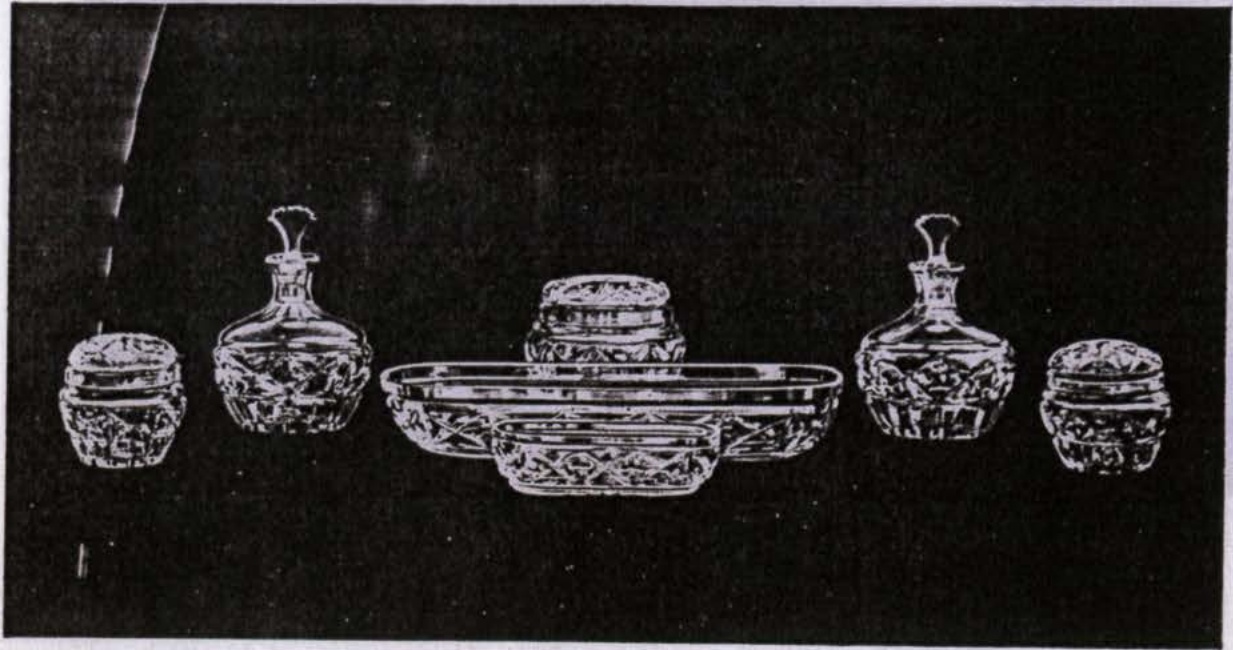
HANS H 22



ORESTE/MOSEL

Pril. garnitur: 2 flakonger, 1 kamäda, 2 knoppaskar, 1 puderskål, 1 näsfat

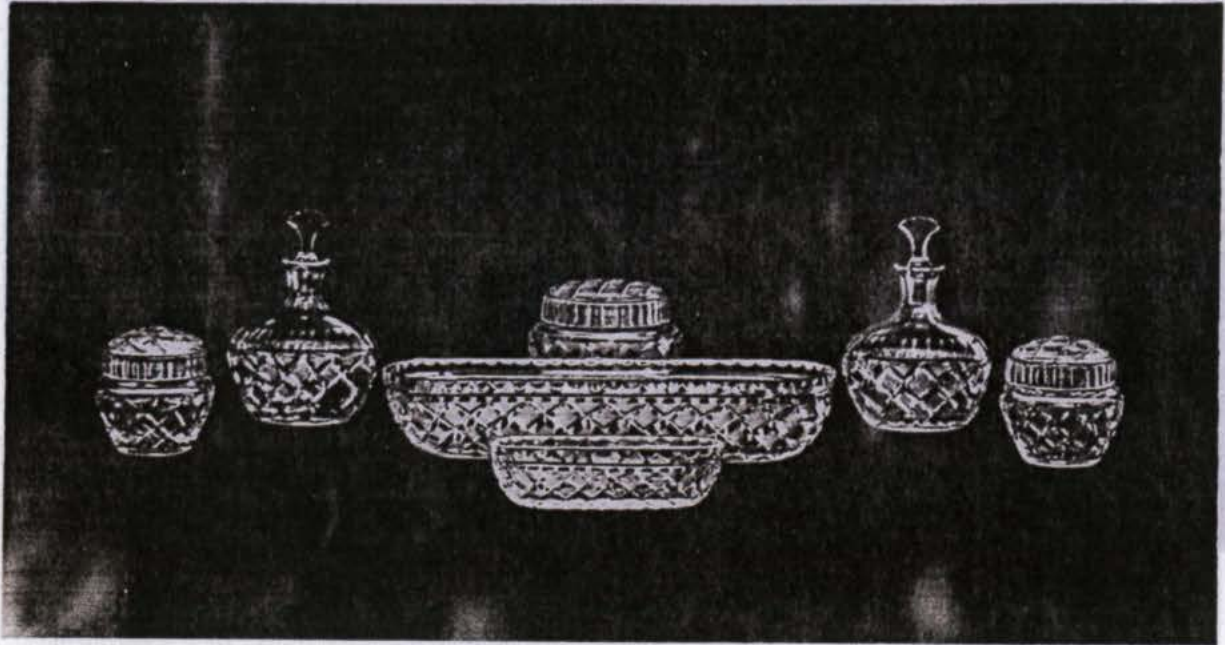




HANS H 22

Flakong .....		
Kamlåda .....		
Kamlåda med lock .....		
Knappask med lock .....		
Puderask med lock .....		
Nålfat .....		
7 pjäser med lock å kamlådan .....		
7 pjäser utan lock å kamlådan .....		
<i>Helt garnityr: 2 flakonger, 1 kamlåda, 2 knappaskar, 1 puderask, 1 nålfat</i> .....		





## HANS RUT

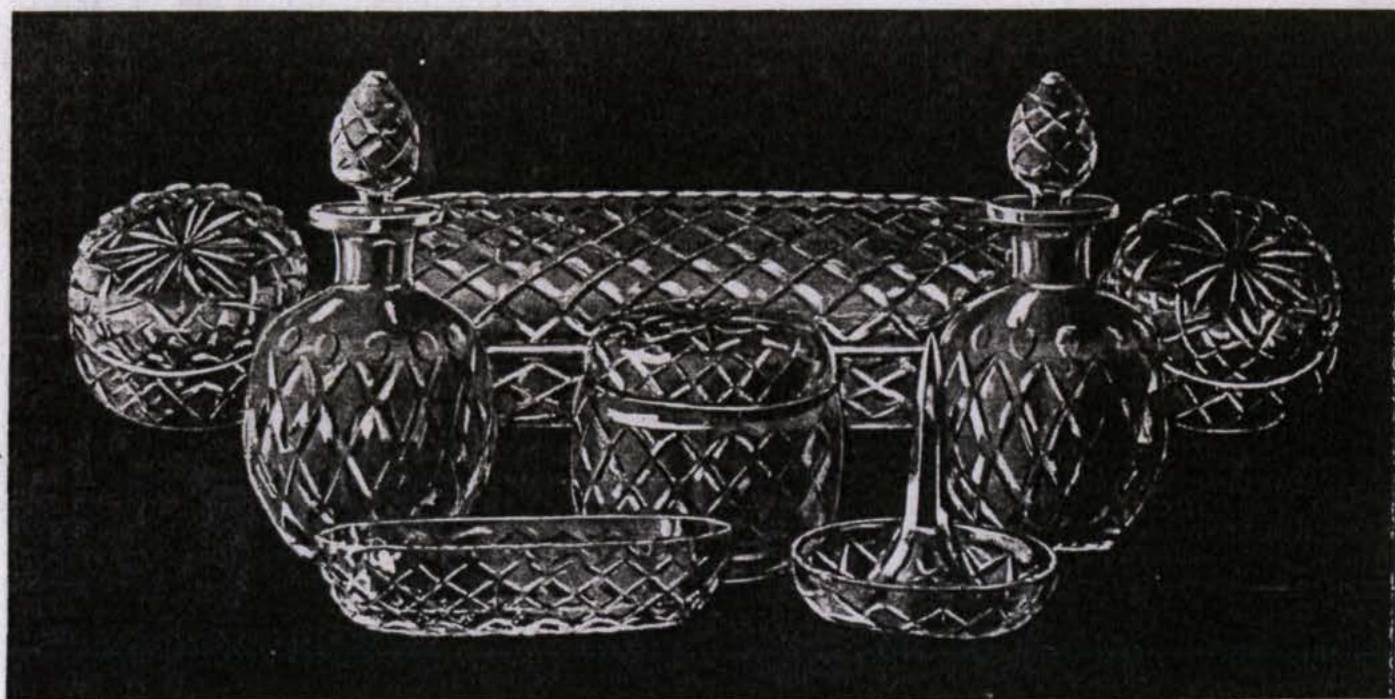
Flakong .....		
Kamlåda .....		
Kamlåda med lock .....		
Knappask med lock .....		
Puderask med lock .....		
Nålfat .....		
7 pjäser med lock å kamlådan .....		
7 pjäser utan lock å kamlådan .....		
<i>Helt garnityr: 2 flakonger, 1 kamlåda, 2 knappaskar, 1 puderask, 1 nålfat</i> .....		





EDSTRÖM/BRILJANT

HANS RUT



EDSTRÖM/A. R.

Helt garnityr: 2 flöskor, 1 kumlåda, 2 knoppkåsar, 1 puderskål, 1 näsli  
Helt garnityr: 2 flöskor, 1 kumlåda, 2 knoppkåsar, 1 puderskål, 1 näsli





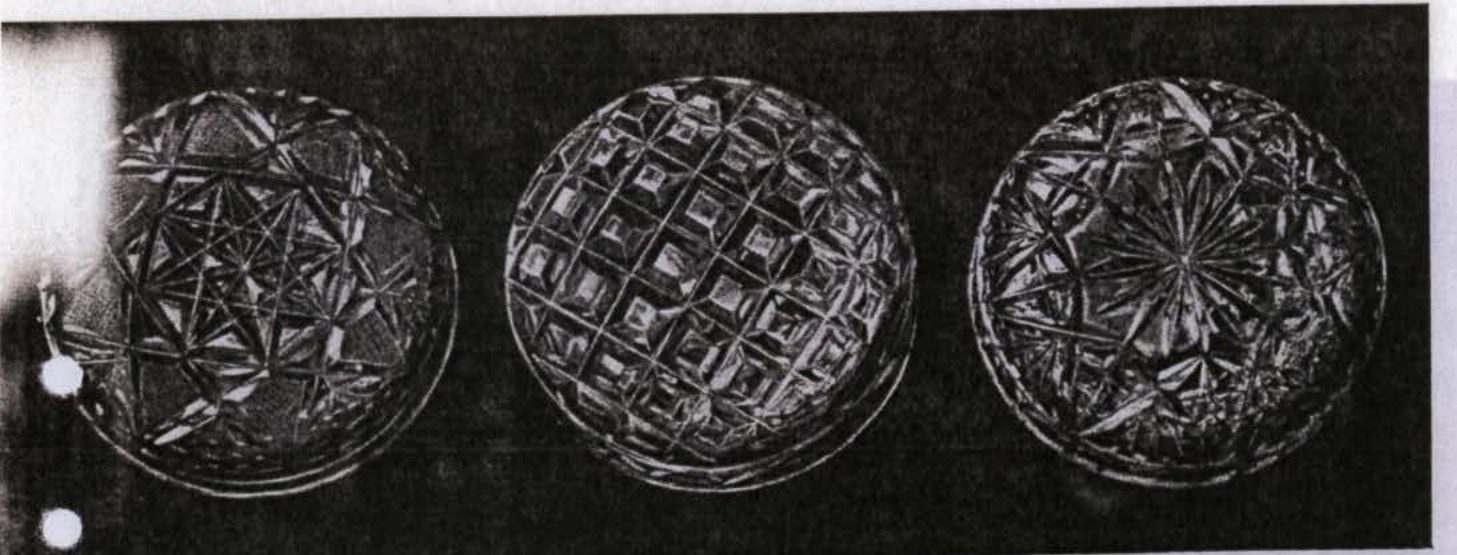
SAX/POSEN

SAX/BRILJANT

SAX/BOJAN

ROVÄBRILJANT

ROVÄRICKARD



SVÄRD/RAGNA

SVÄRD/BRILJANT

SVÄRD/POSEN

SAXIGÖTA

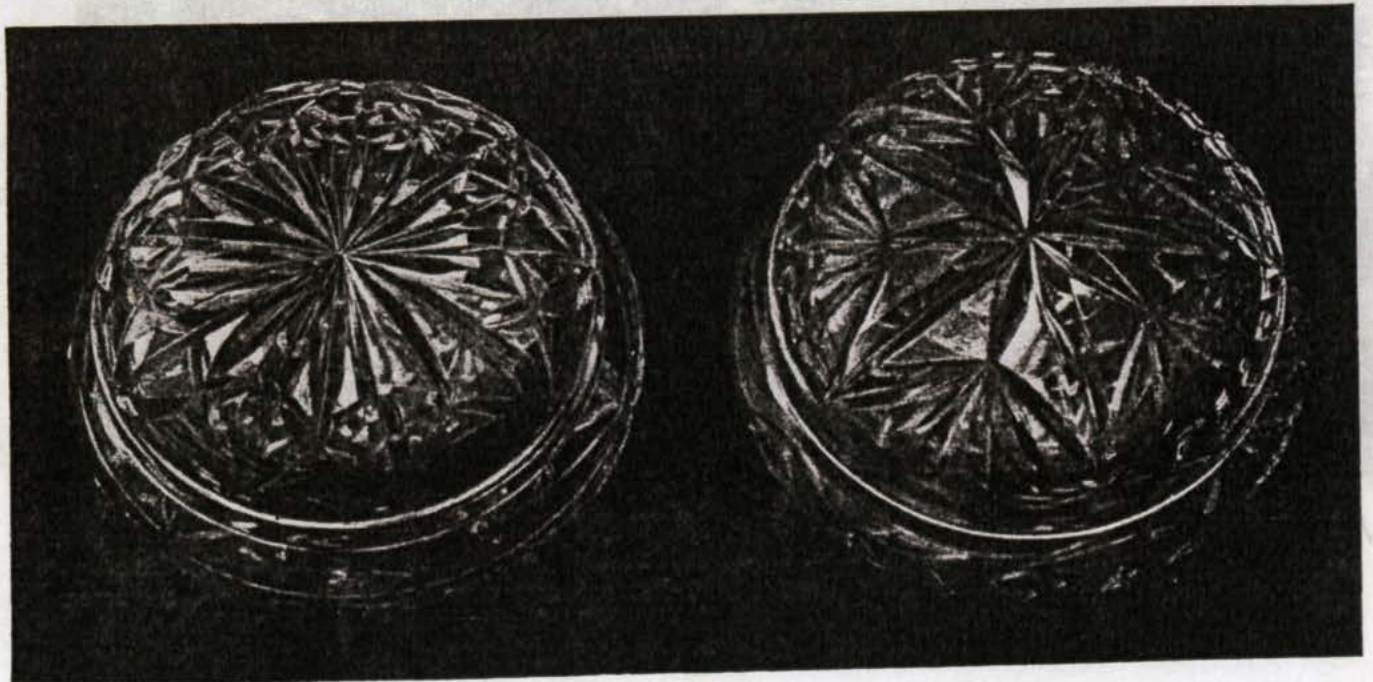
SAXH 12





ROVA/RICKARD

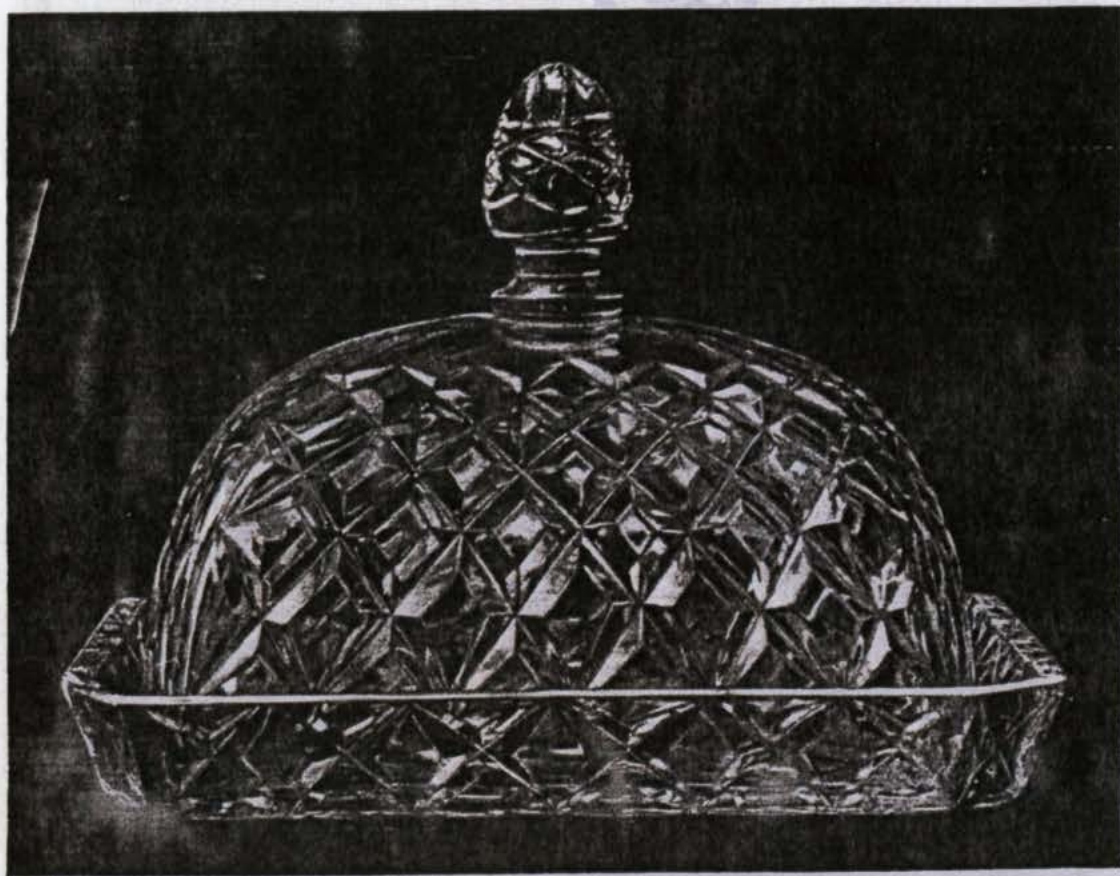
ROVA/BRILJANT



SAX/H 22

SAX/GÖTA



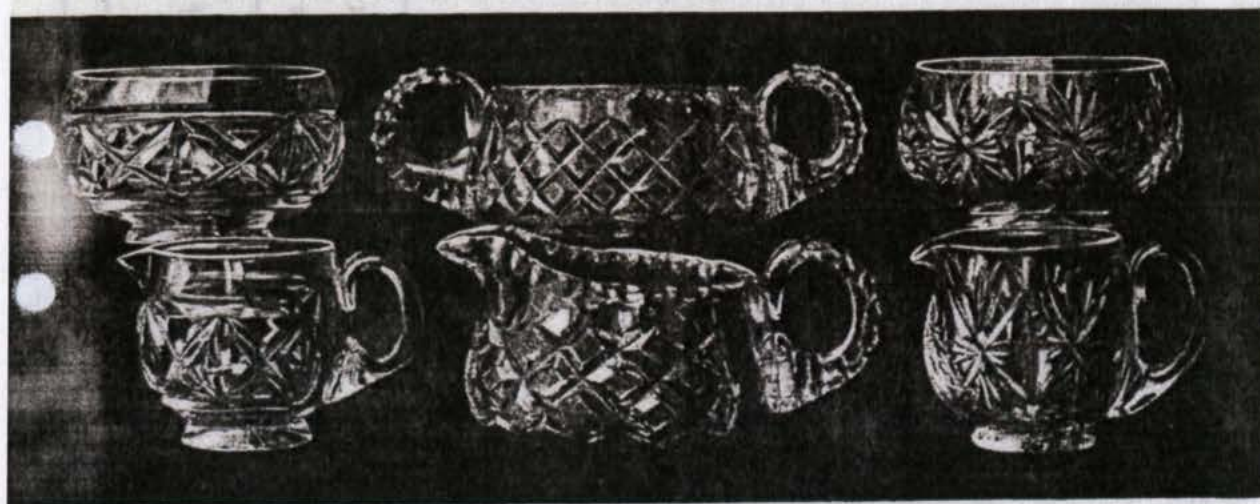


KARLSTAD/BRILJANT

STAIN MAJ

ERNST OTTO

AQUA H. 22



TORA/H 22

ROVA/A. R.

TORA/BÄVE





AQUA H 22

ERNST OTTO

STEIN MAJ

	Karaff	Glas
Aqua H 22 .....		
Ernst Otto .....		
Stein Maj .....		
.....		
.....		

TORAVÄVE

ROVAVA R.

TORAH 22

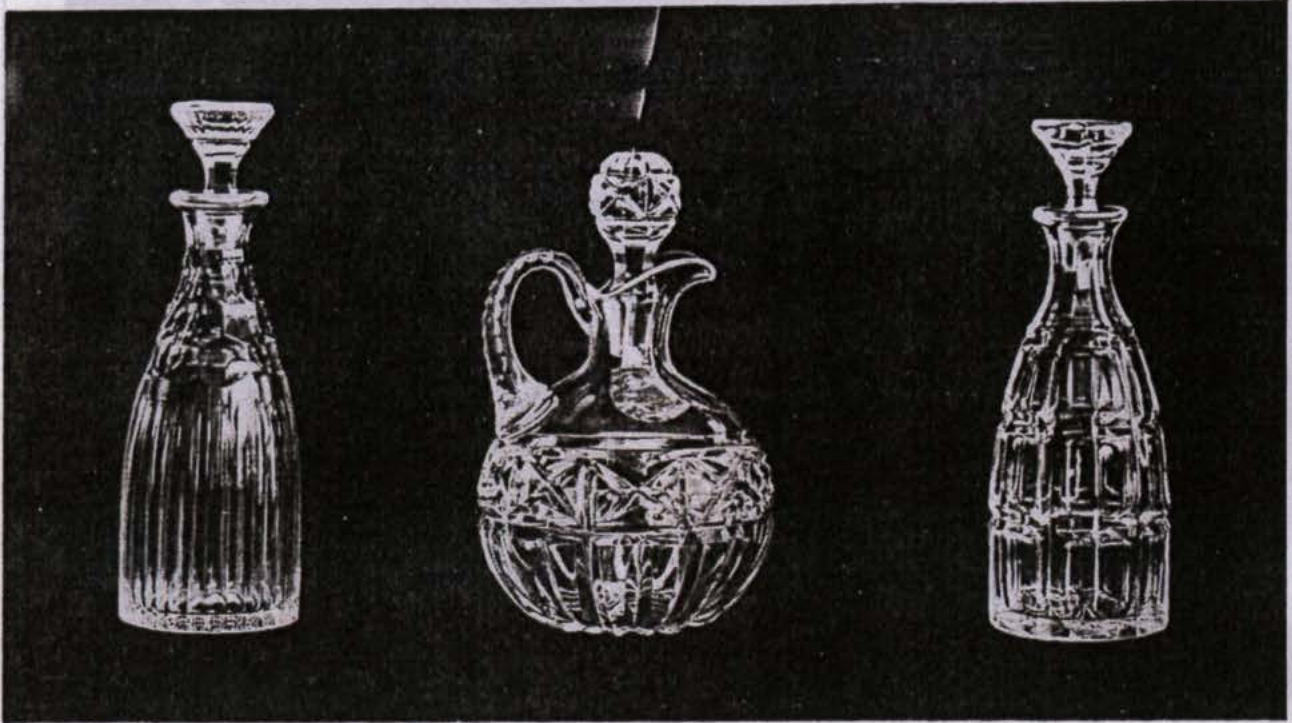




ERLAND MAJ THORLEIF BRILJANT 1918 BRILJANT

	cl.	65	100
Erland Maj .....			
Thorleif Brilljant.....			
1918 Brilljant .....			
.....			
.....			
.....			





HALVOR OLIVA      HUMMEL H 22      HALVOR LAGE

Halvor Oliva .....

Hummel H 22 .....

Halvor Lage .....

.....

.....





PRAKTISK/SOFIA

LEO/BALTIC

PRAKTISK/OVAL



SOFIA/HELGE

VERDUN/VERDUN

VERDUN/BERO





NORGE/PLAN

NORGE/BRILJANT



4-KANT./BRILJANT

4-KANT./A. R.

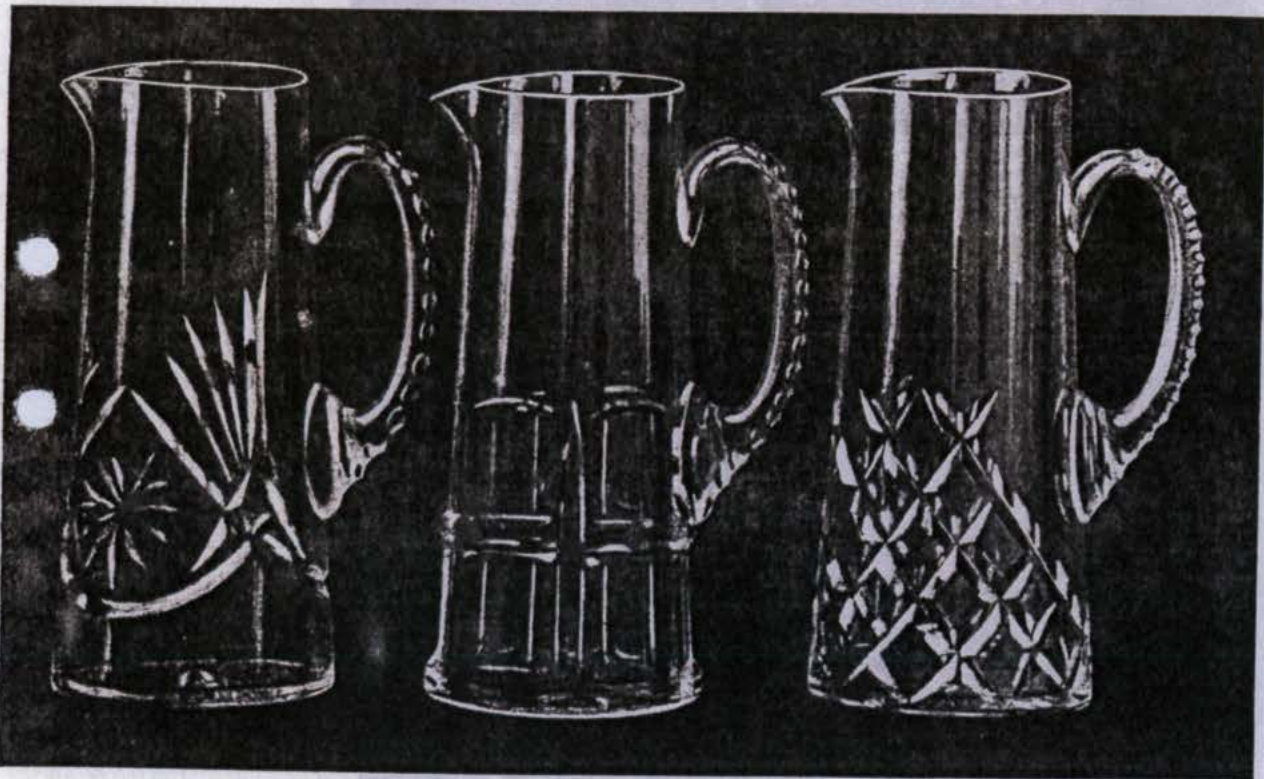
4-KANT./ALGOT





STEIN/NORDSTJÄRNAN

STEIN/1000



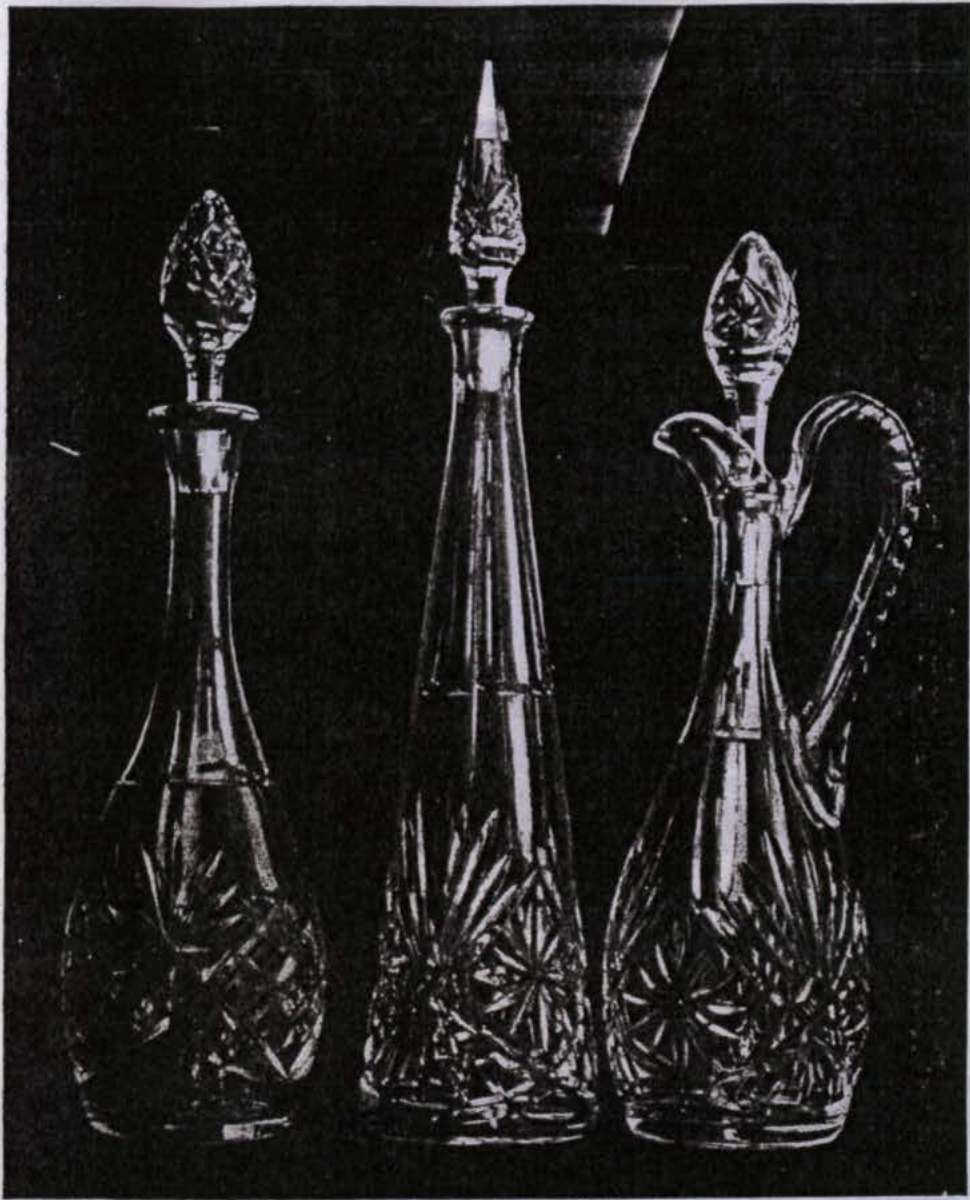
WALDERSEE  
NORDSTJÄRNAN

WALDERSEE  
LAGE

WALDERSEE/BRILJANT

TOP/1000



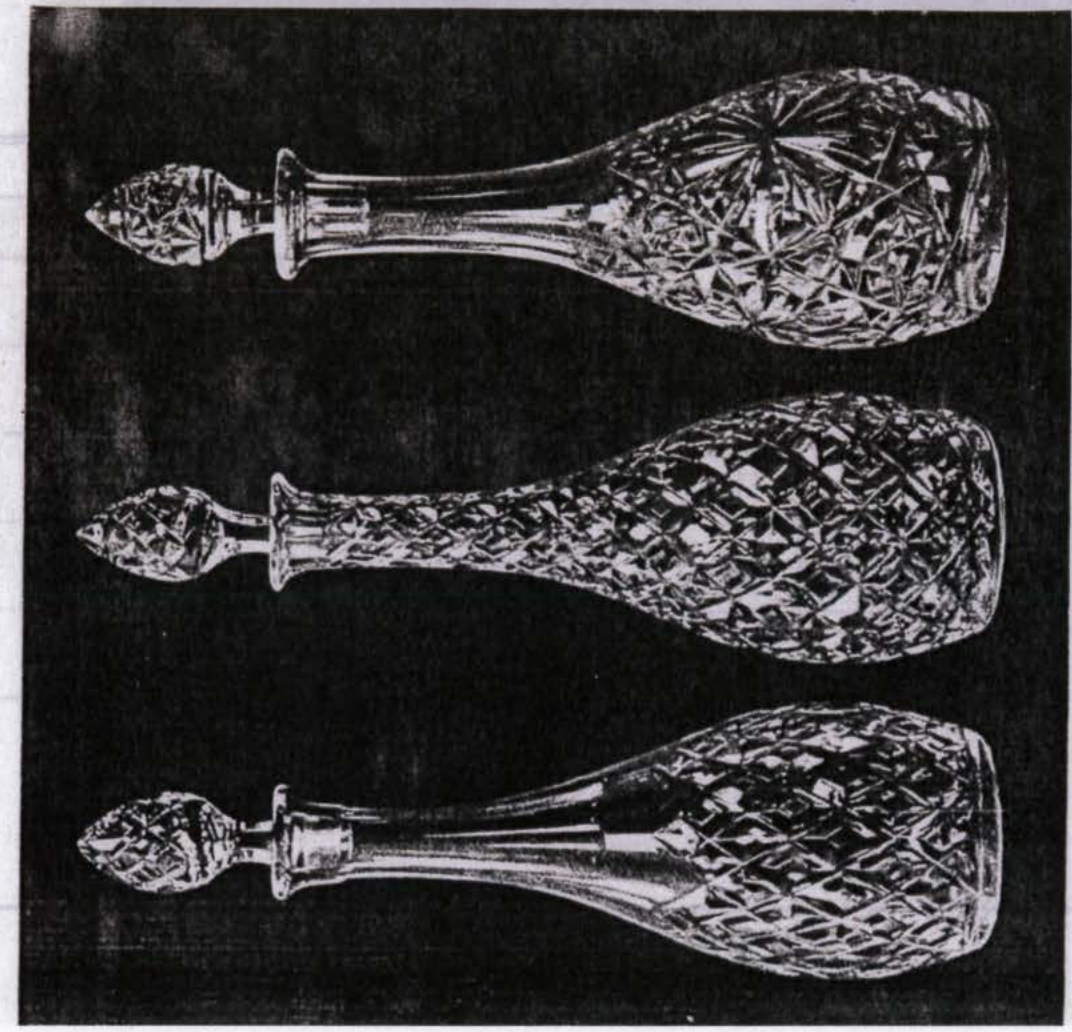


TOP/1000 — TIPPO/NORDSTJÄRNAN — TOP/NORDSTJÄRNAN

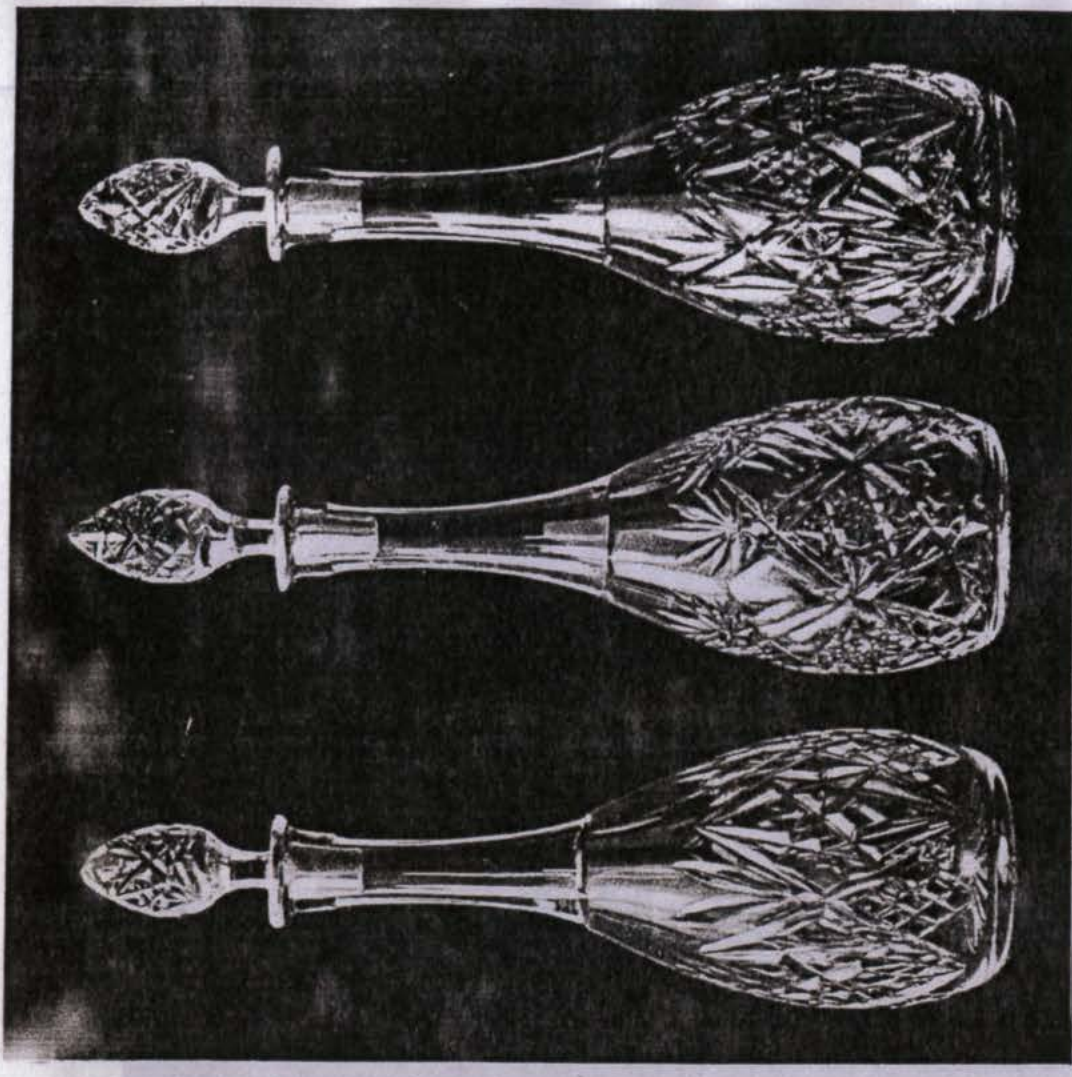


NORDSTJÄRNAN  
WALDERSEE





TOP/BRILJANT TOP/HELBRIJLJ. TOP/H 1



TOP/GÖTA TOP/ALGOT TOP/GUNNAR





KARL SPENSER

EDVIN SPENSER

KARL RUT

cl.	Utan Grepe			Med Grepe		
	32	65	80	32	65	80
Karl Spenser.....						
Edvin Spenser.....						
Karl Rut.....						
.....						
.....						

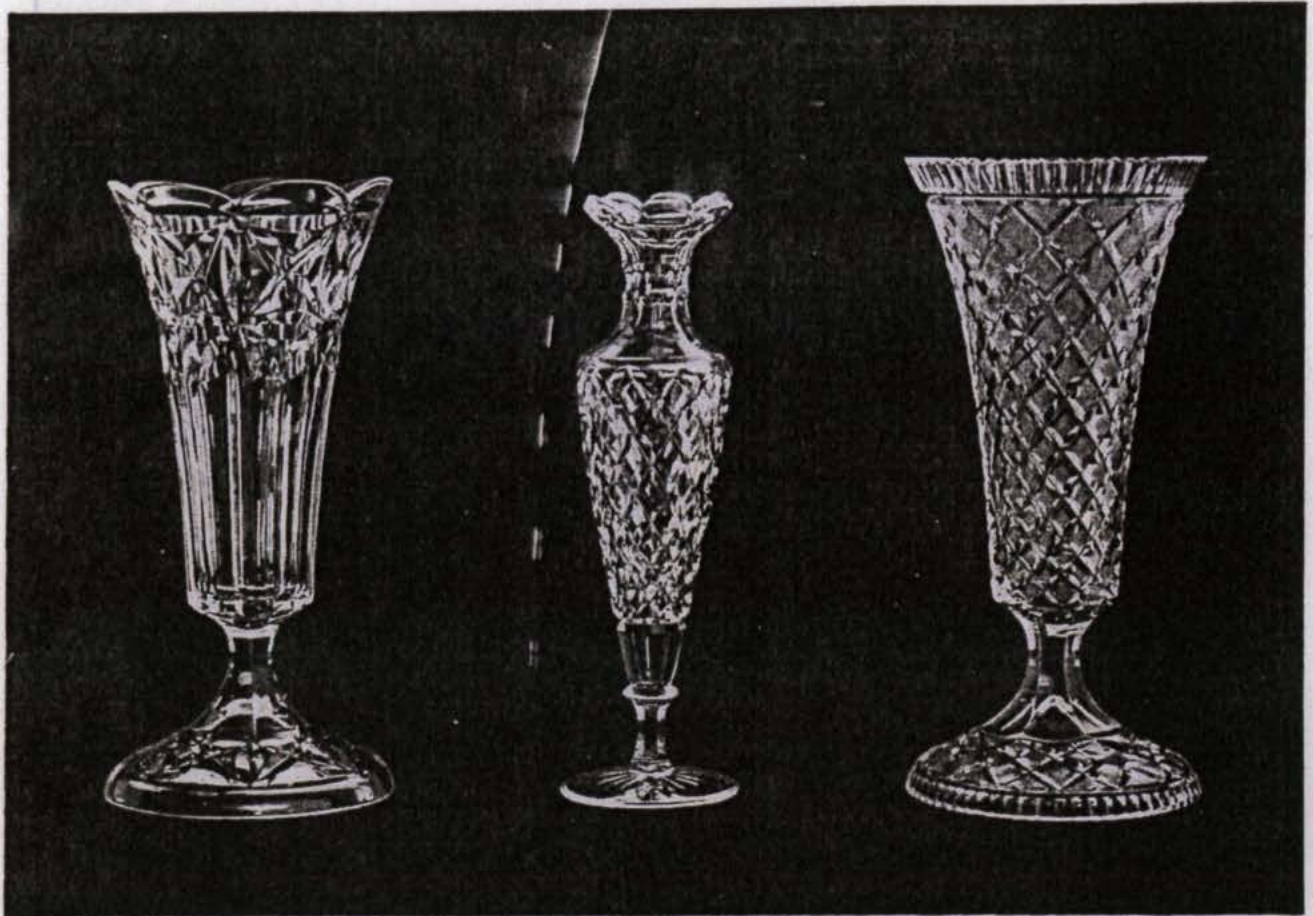




ISAK MAJ      BENGT SPENSER      ADA DIAMANT

	m/m	175	200	210	250	300
Isak Maj .....						
Bengt Spenser .....						
Ada Diamant.....						
.....						
.....						





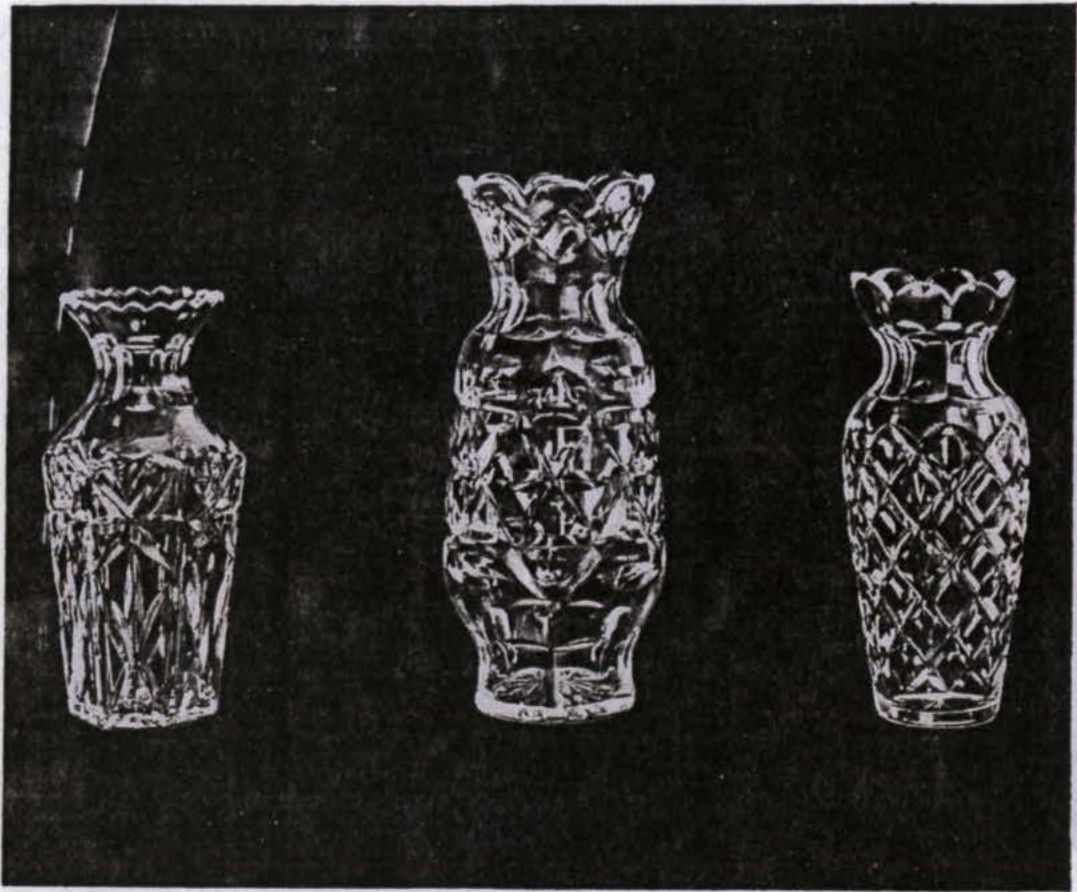
EVA OTTO

MATADOR BRILJANT

EVA RUT

						m/m	300
Eva Otto.....							
Matador Brilljant.....							
Eva Rut .....							
.....							
.....							





ALBIN

DAN EBBA

EUGEN HALVBRILJANT

	m/m	150	175	200	250	300	350
Albin .....							
Dan Ebba .....							
Eugen Halvbriljant .....							
.....							
.....							





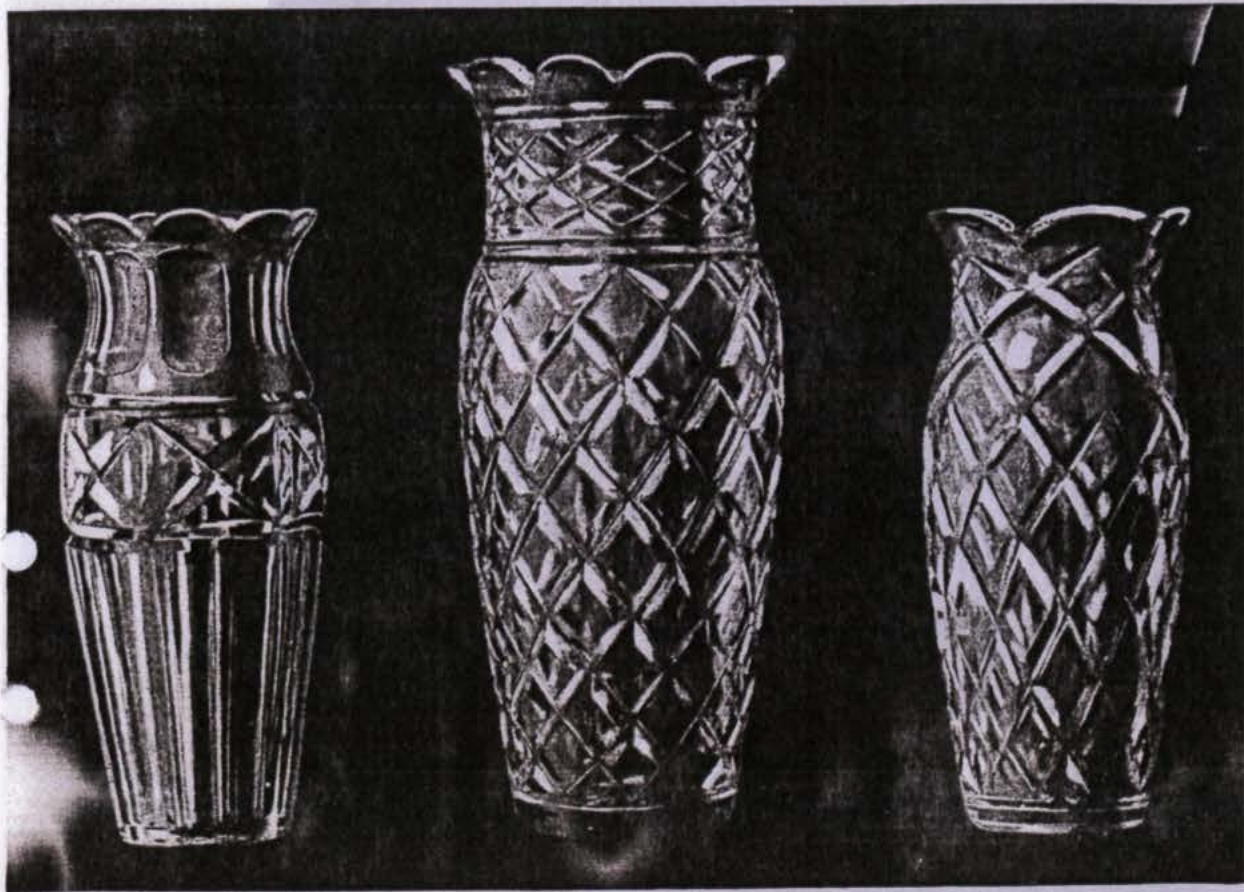
KARL 1

KARL 2

KARL 3

	m/m	150	175	200	250
Karl 1 .....					
Karl 2 .....					
Karl 3 .....					
.....					
.....					

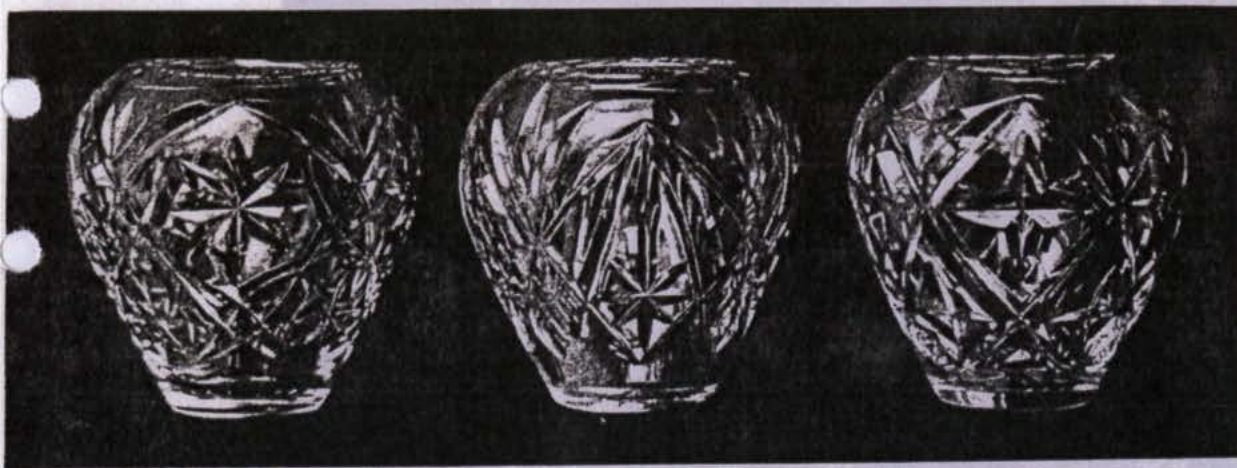




SAGA/H 22

SAGA/ANTIKUS

SAGA/BRILJANT



HALD/H 9

HALD/GUNNAR

HALD/H 7





O/A. R.

O/EINAR

O/GUNNAR



KNUT/BRILJANT — SÄFSTEN/SVAN — KNUT/80

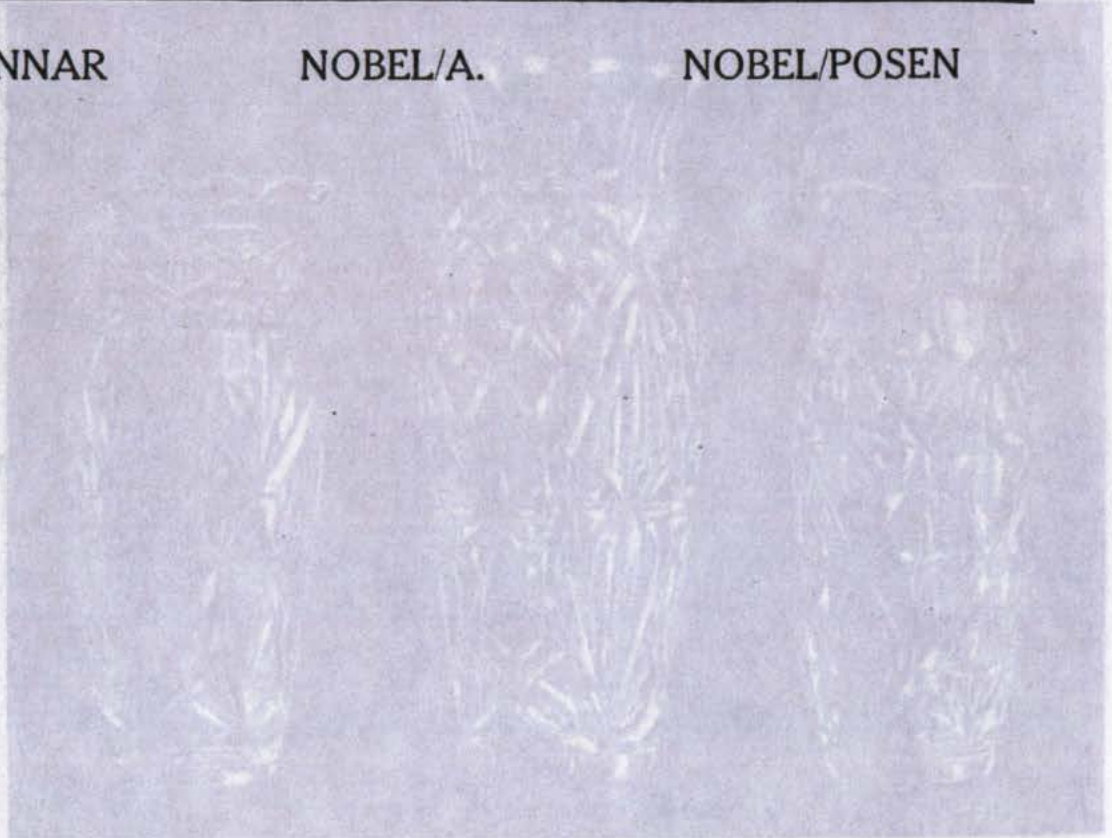




NOBEL/GUNNAR

NOBEL/A.

NOBEL/POSEN

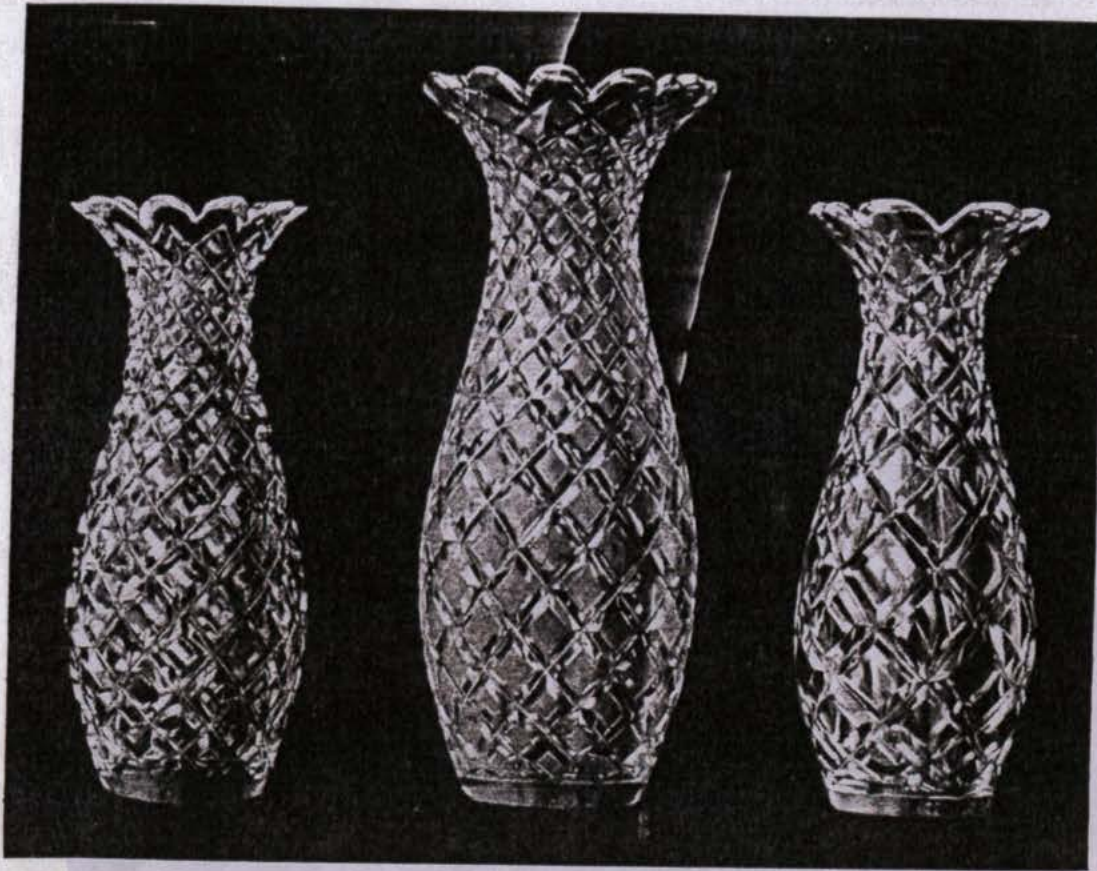


SAGAGUNNAR

SAGATOR

SAGAH 7





NOBEL/BRILJANT

NOBEL/A. R. NOBEL/HALVBRILJANT



SAGA/H 7

SAGA/TOR

SAGA/GUNNAR